

ORACLE

LED ILLUMINATED WHEEL RING INSTALLATION GUIDE

TOOLS NEEDED:

KIT CONTENTS:



ACCESS YOUR BRAKE SYSTEM

ALIGNING LIGHTING WHEEL

Begin removing the wheels from your vehicle. Behind each brake system is an aluminum/steel brake dust shield located by the arrow in the left picture. This is what will be used to mount your ORACLE Illuminated Wheel Rings to.



Mock up lighting ring in desired location, generally centered with the brake system. You may test your ring before going any further by wiring it up to any 12 volt power source. Now mark the ring in 3 locations. This is where you will drill into your dust shield and into the ring.

MOUNTING BRACKETS

DRILLING DUST SHIELD

Three mounting brackets will be used per each ring. The pre-drilled hole is where the ring mounts to the bracket. However, you will need to drill through the aluminum wheel and use the self tapping screws, to drill through the dust shield.



Use the self tapping screws to tap into the dust shield and the bracket at the same time. This will insure that the bracket is mounted tightly to the dust shield.



DRILLING LIGHTING WHEEL

MOUNTING LIGHTING WHEEL



Use your drill and drill bit to drill into the aluminum lighting wheel in the locations marked in the previous steps.



WWW. ORACLELIGHTS.COM

CONTINUED....

FASTENING WIRES

All wires should be securely fastened. Use zipties to make sure no wires are hanging. However, some slack is required around the brake system to allow the vehicle's suspension to have full motion without stripping, damaging, or disconnecting any wires.

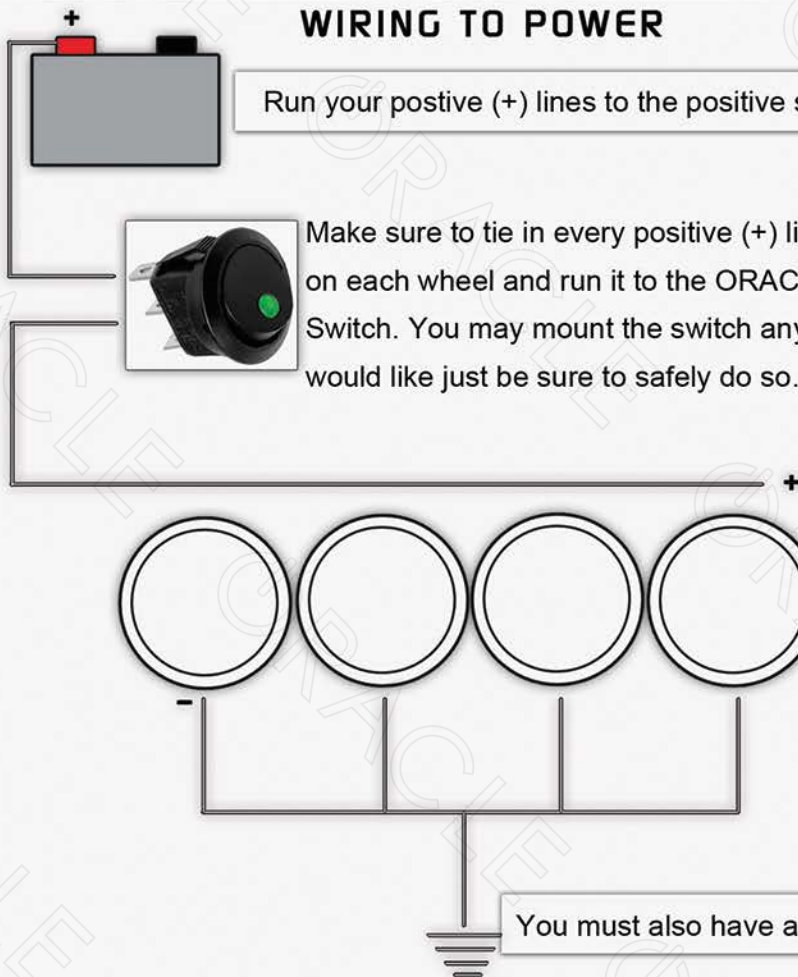


Now that your lighting wheel ring is fully installed, you must wire each ring to the ORACLE Rocker Switch that is provided. A wiring diagram is provided below to insure proper installation.

Wiring should be done by a professional to insure no risk to the installer(s) or vehicle. All wired connections should be secure and properly waterproofed. For questions about the install or any of our products call toll free 1-800-407-5776



WIRING TO POWER



Run your positive (+) lines to the positive side of your vehicle's battery.

Make sure to tie in every positive (+) line together on each wheel and run it to the ORACLE Rocker Switch. You may mount the switch anywhere you would like just be sure to safely do so.

Use electrical tape to protect any wires from exposed weather and elements.

Each negative (-) line must be wired together and grounded to the vehicle's frame or other grounded source.

You must also have an in-line fuse to insure proper electrical protection.

Please check your state and local laws before installing any ORACLE Lighting products onto your vehicle. Every state has different policies and procedures regarding aftermarket lighting accessories. Be safe and enjoy!

WWW. ORACLELIGHTS.COM