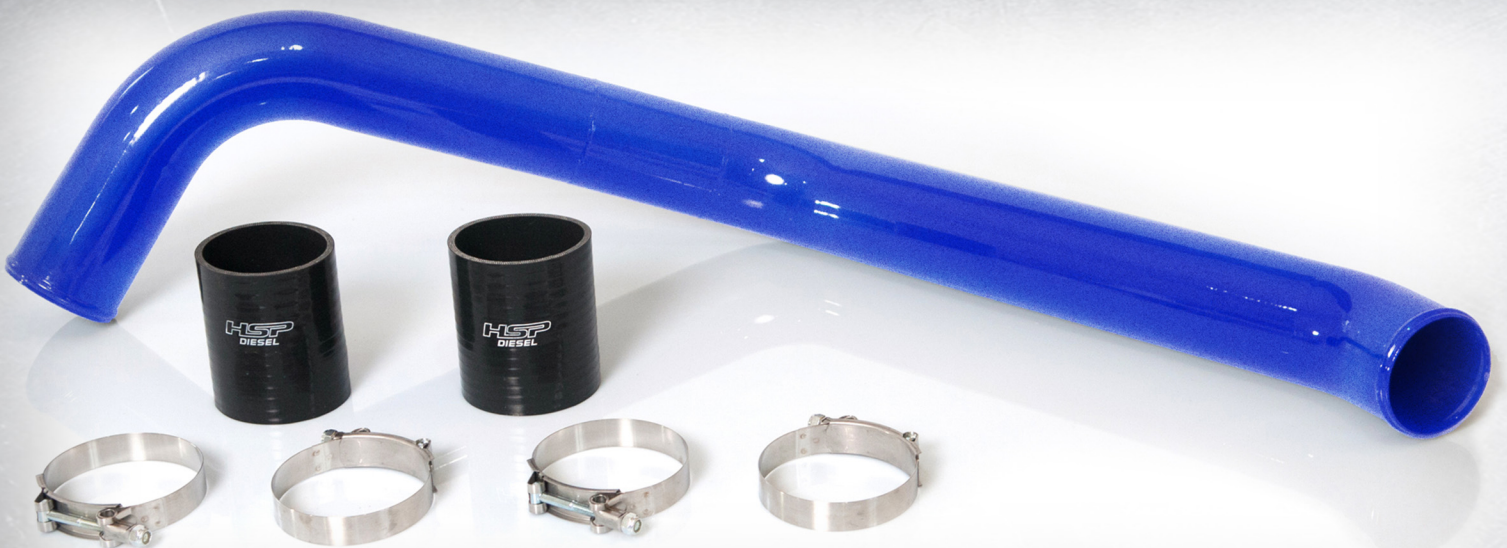


# HSP DIESEL



**HOT SIDE INTERCOOLER TUBE  
INSTALLATION INSTRUCTIONS**

## ABOUT THE HOT-SIDE INTERCOOLER TUBE

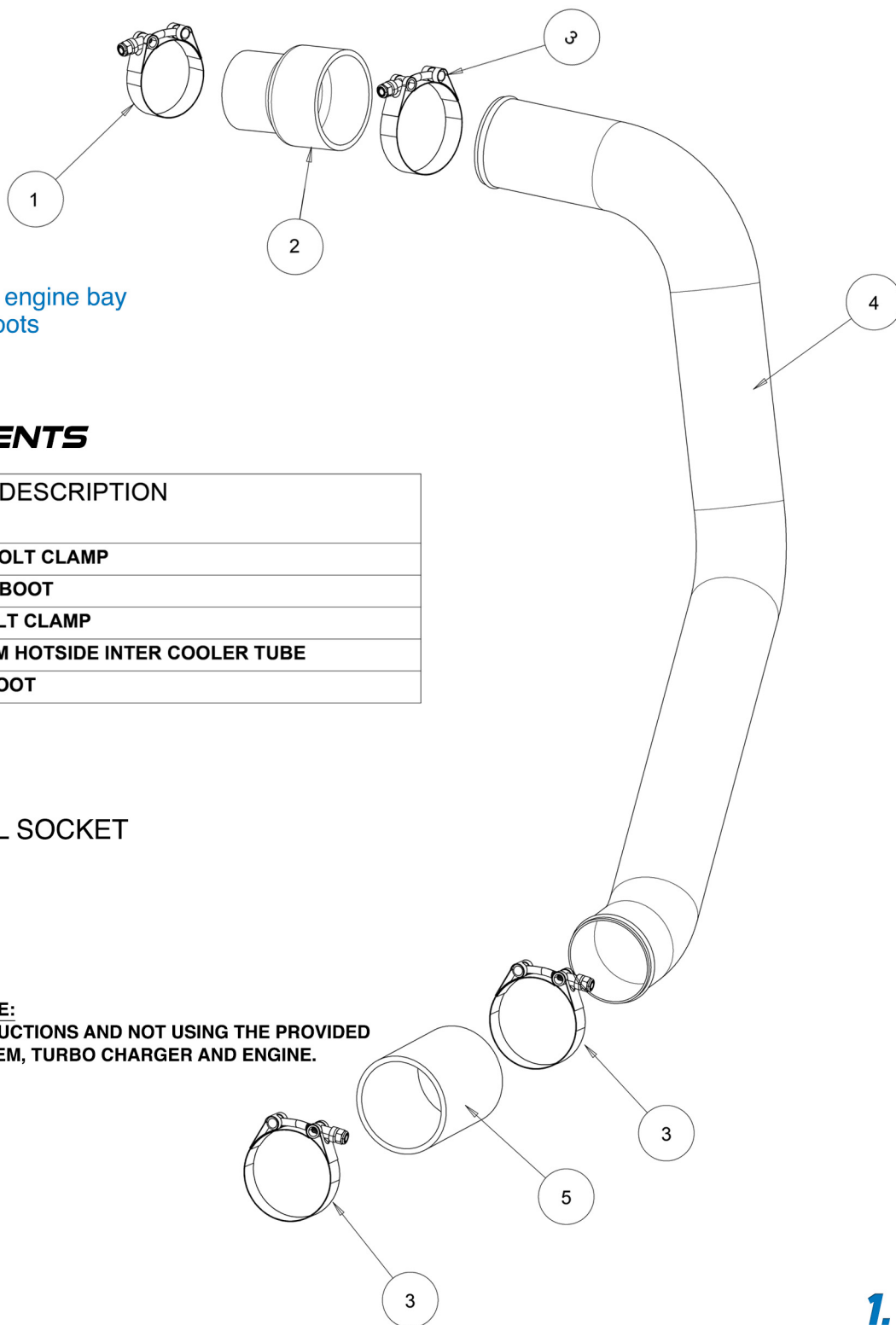
THE HSP HOT SIDE INTERCOOLER TUBE INCREASES PERFORMANCE AND FLOW UP TO 40% OVER STOCK. CONSTRUCTED FROM 3" MANDREL BENT TUBING FOR SMOOTH, SWEEPING BENDS, AND PROPER FITMENT. THE HSP HOT SIDE INTERCOOLER TUBE ELIMINATES THE WEAK, AND PRONE TO FAIL FACTORY LOWER INTERCOOLER BOOT. OUR DESIGN ALLOWS FOR A STRAIGHT CONNECTION TO THE INTERCOOLER, ELIMINATING ANY ISSUES WITH THE SILICONE BOOT. YOU WILL ALSO NOTICE A CRISPER ENGINE AND TURBOCHARGER TONE. HSP DIESEL SPECIALIZES IN CAPTURING THE CUSTOM LOOK YOU DESIRE WITH OUR VARIETY OF POWDER COATING OPTIONS. BRING OUT THE TRUE SOUND OF YOUR DIESEL TRUCK WITH THIS INTERCOOLER TUBE.

### COMPATIBILITY

- LB7: 01-04 VIN Code 1
- LLY: 04.5-05 VIN Code 2
- LBZ: 06-07 VIN Code 2 or D
- LMM: 07.5-10 VIN Code 6

### BENEFITS

- Increased performance
- Powder coating option to dress up engine bay
- Upgraded high strength silicone boots
- Straight entrance into intercooler



### INCLUDED COMPONENTS

NUM.	PART NUMBER	QTY	PART DESCRIPTION
1	420-RFAB	1	2.25 T-BOLT CLAMP
2	441-RFAB	1	2.25-3.0 BOOT
3	422-RFAB	3	3" T-BOLT CLAMP
4	207-RFAB	1	LB7-LMM HOTSIDE INTER COOLER TUBE
5	430-RFAB	1	3"X4" BOOT

### REQUIRED TOOLS

- 11MM 3/8" DRIVE DEEP WELL SOCKET
- 3/8" RATCHET
- PLASTIC CLIP REMOVER
- 10MM SOCKET
- 7MM SOCKET

**NOTE:**

FAILURE TO FOLLOW INSTALLATION INSTRUCTIONS AND NOT USING THE PROVIDED HARDWARE MAY DAMAGE THE SYSTEM, TURBO CHARGER AND ENGINE.



## STEP 1

Start by removing the driver's side plastic wheel well. It may be necessary to remove the mud flap on some trucks.



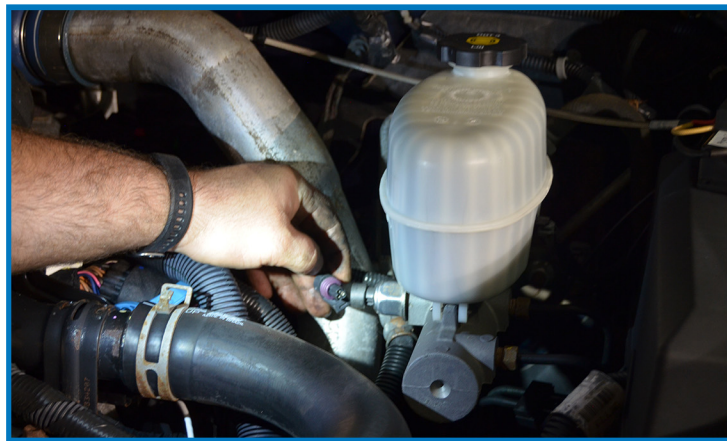
## STEP 2

Now go through the wheel well and remove the T-bolt clamp from the intercooler to hot side boot connection using a 11mm deep socket and 3/8" ratchet.



## STEP 3

With the wheel well removed using a 11mm socket remove the t-bolt clamp from the discharge of the turbo charger to the hot side intercooler tube.



## STEP 4

On 08-10 trucks, unplug the pressure sensor on the side of the brake master cylinder to avoid breaking the connector.



## STEP 5

Remove the factory hot side tube by lifting it up through the engine compartment.

## STEP 6

With the tube, boots, and clamps removed wipe down the turbo and intercooler connections with a rag and break clean to remove any oil residue.



## STEP 7

Using the supplied boots and clamps, slide the 3"x4" boot on to the intercooler and rotate the clamps so they are easily accessible. Tighten the inner clamp on the intercooler and then slide the clamp for the hot side on the boot but don't tighten at this time.

## STEP 8

Locate the 2.25" to 3" reducer boot and 2.25" clamp. Slide the boot on to the turbo charger and tighten the clamp.



### STEP 9 ▶

*With the clamp tight slide the 3" clamp on to the boot but don't tighten at this time.*



### STEP 10 ▶

*Slide the new hot side intercooler tube in to position being careful not to scratch it. With it in place slide it all the way into the boot at the intercooler.*



### STEP 11 ▶

*Now you have to get the tube into the boot at the turbo charger. This will be a bit more difficult than the factory hot side due to the upgraded boots. It is easiest to push the tube down on the boot and gently working the boot over the tube using a hose pick or a blunt end screw driver.*



### STEP 12 ▶

*With the hot side in place make sure there is plenty of room between the hot side and brake booster. Now tighten the other two clamps and re-install the wheel well.*



**15085 32 MILE RD, ROMEO, MI 48065**  
**HSPDIESEL.COM**  
**(586) 785-3110**