

The logo features a stylized blue icon above the text. The icon consists of a central circle with two diagonal lines extending upwards and outwards, resembling a signal or a stylized 'D'.

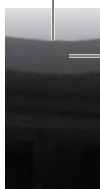
DFC
DIESEL

**5 year 160,000 km (100,000 mi)
WARRANTY**

OWNERS MANUAL

MAHLE

RÖTTLER




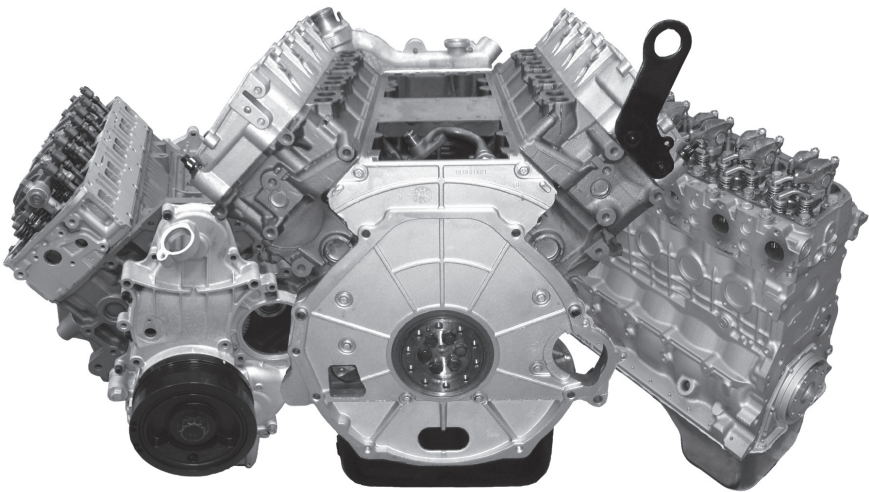



TABLE OF CONTENTS

BREAK IN PERIOD	3
OIL CHART	4
WHAT TO DO IN CASE OF A WARRANTY CONCERN	5
REPAIRS	6
COVERAGE OF WARRANTY PERSONAL USE	7
COVERAGE OF WARRANTY COMMERCIAL VEHICLES	8
MAINTENANCE LOG	9
COMMON FAILURES	17
NOTES	18

Thank you for purchasing Canada's leading remanufactured diesel engine. Our goal is to provide you with the most reliable, longest lasting engine on the market. Great lengths have been taken to ensure all of our engines exceed OEM expectations, improving on factory flaws and we thank you again for your business.





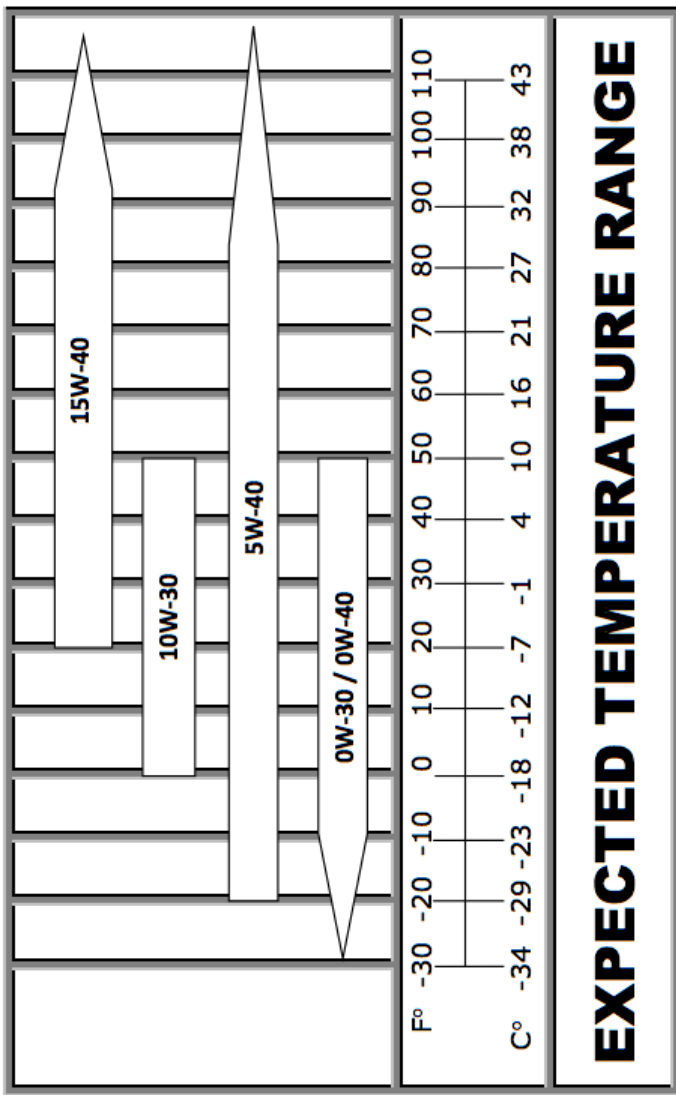
BREAK IN PERIOD

Your new diesel engine has been remanufactured to the highest quality, utilizing the most state of the art equipment found in Canada. As such it does not require a formal break-in period, but here's a few tips to ensure trouble free and long lasting performance.

1. First oil change after 1,000 km (600 mi)
2. No synthetic oil first 15,000 km (9,000 mi)
3. Avoid extended idle periods first 1,000 km (600 mi)
4. No towing / heavy loads first 700 km (400 mi)
5. Allow 30 seconds after starting before driving vehicle
6. Use proper oil grade for ambient temperatures (refer to chart on page 5)
7. Follow regular oil change intervals of no more than 10,000 km (6,000 mi) (refer to manual)
8. Regular servicing of fuel and air filters.

DFC recommends if using a Cold Air Intake to only use S & B filters.

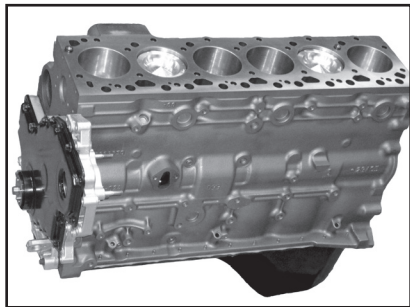
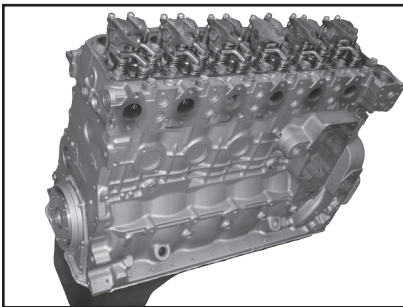
OIL CHART



EXPECTED TEMPERATURE RANGE

WHAT TO DO IN CASE OF A WARRANTY CONCERN

1. Write down as much information as possible such as unusual noises, leaks, any lights in gauge cluster and what happened leading up to the incident.
2. During regular business hours contact DFC at **1-877-836-8341** and we will promptly assist with the concern. After regular business hours you will need to have your vehicle taken to your nearest DFC authorized repair centre or shop of your preference if none are available.
3. If ever unsure as to the severity of a problem; it's best to have your vehicle towed to avoid additional damages.
4. Once at a repair facility you will need to contact DFC requesting a Warranty Approval Form. The shop will then need to perform the diagnostics necessary as to the failure and complete the form. The form then needs to be faxed to **780-455-0874** or emailed to **dfcdiesel@live.ca**. Forms will be completed and returned within 1 business day stating what parts and labour will be covered.



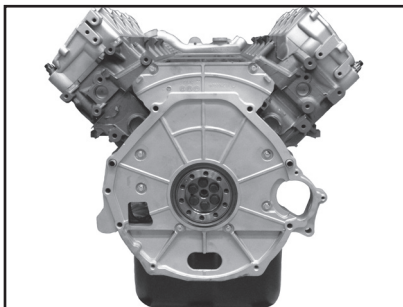
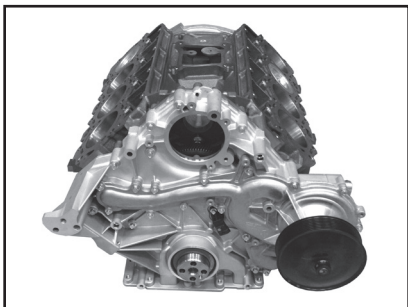
REPAIRS

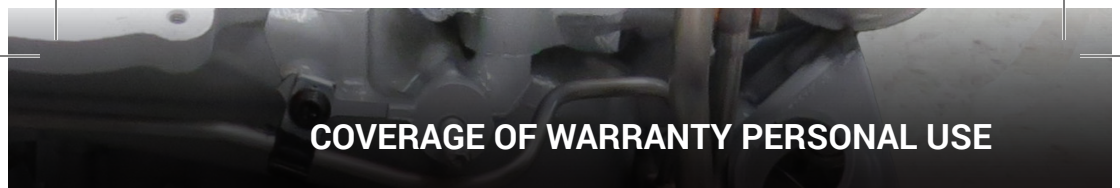
IMPORTANT

Repairs that are authorized without DFC approval may be denied and owner will be responsible for all repair costs.

A FEW TIPS TO REMEMBER

- DFC typically covers full shop labour within first 90 days of purchase.
- Labour is then paid out at **\$70/hr CAN (\$50/hr US)** to a max of **\$2,500 CAN (\$2,000 US)** based off Mitchell Time.
- Balance of labour is due by owner as a deductible.
- Any and all parts must be provided by DFC. Parts from other suppliers will not be reimbursed.
- You may be asked to provide original Bill of Sale, Service History and all costs incurred before submitting a claim to hasten the warranty process.





COVERAGE OF WARRANTY PERSONAL USE

DFC covers materials and workmanship for a period of 5 years, 160,000 km (100,000 mi).

First 3 years 100,000 km (60,000 mi) is Parts plus Labour to a max of **\$2,500 CAN (\$2,000 US)** (see warranty manual).

Seal and Gasket Leaks are limited to 1 year parts and labour, 2 year parts. Injector and Turbo warranty is based off supplied manufacturers warranty including any parts not remanufactured by DFC.

If selling vehicle warranty is fully transferrable, please see warranty booklet for full details.



COVERAGE OF WARRANTY COMMERCIAL VEHICLES

Includes such vehicles as: Ambulance, Police, Government, Automotive Off Hwy, Delivery, Snow/Scrap Removal, Tow Truck, Taxi, Hot Shot, Farm and Service Trucks etc.

DFC covers materials and workmanship for a period of 1 year 30,000 km (20,000 mi) or 1,000 hours whichever comes first.

Extended warranty available for purchase extends coverage to 3 year 100,000 km (60,000 mi) or 2,500 hours. Contact DFC or check warranty package for full details.

Seal and gasket leaks are limited to 1 year parts and labour, 2 year parts. Injector and Turbo warranty is based off supplied manufacturer's warranty including any parts not remanufactured by DFC.

Oil change intervals are reduced to 6,500 km (4,000 mi) or 3 months whichever comes first. Refer to warranty manual for full details.

MAINTENANCE LOG

DATE:	DEALER STAMP:
MILEAGE:	
OIL TYPE:	
OIL FILTER:	
AIR FILTER:	
FUEL FILTER:	

DATE:	DEALER STAMP:
MILEAGE:	
OIL TYPE:	
OIL FILTER:	
AIR FILTER:	
FUEL FILTER:	


DATE:	DEALER STAMP:
MILEAGE:	
OIL TYPE:	
OIL FILTER:	
AIR FILTER:	
FUEL FILTER:	

MAINTENANCE LOG

DATE:	DEALER STAMP:
MILEAGE:	
OIL TYPE:	
OIL FILTER:	
AIR FILTER:	
FUEL FILTER:	

DATE:	DEALER STAMP:
MILEAGE:	
OIL TYPE:	
OIL FILTER:	
AIR FILTER:	
FUEL FILTER:	

DATE:	DEALER STAMP:
MILEAGE:	
OIL TYPE:	
OIL FILTER:	
AIR FILTER:	
FUEL FILTER:	



MAINTENANCE LOG

DATE:	DEALER STAMP:
MILEAGE:	
OIL TYPE:	
OIL FILTER:	
AIR FILTER:	
FUEL FILTER:	

DATE:	DEALER STAMP:
MILEAGE:	
OIL TYPE:	
OIL FILTER:	
AIR FILTER:	
FUEL FILTER:	


DATE:	DEALER STAMP:
MILEAGE:	
OIL TYPE:	
OIL FILTER:	
AIR FILTER:	
FUEL FILTER:	

MAINTENANCE LOG

DATE:	DEALER STAMP:
MILEAGE:	
OIL TYPE:	
OIL FILTER:	
AIR FILTER:	
FUEL FILTER:	

DATE:	DEALER STAMP:
MILEAGE:	
OIL TYPE:	
OIL FILTER:	
AIR FILTER:	
FUEL FILTER:	

DATE:	DEALER STAMP:
MILEAGE:	
OIL TYPE:	
OIL FILTER:	
AIR FILTER:	
FUEL FILTER:	



MAINTENANCE LOG

DATE:	DEALER STAMP.
MILEAGE:	
OIL TYPE:	
OIL FILTER:	
AIR FILTER:	
FUEL FILTER:	

DATE:	DEALER STAMP.
MILEAGE:	
OIL TYPE:	
OIL FILTER:	
AIR FILTER:	
FUEL FILTER:	


DATE:	DEALER STAMP.
MILEAGE:	
OIL TYPE:	
OIL FILTER:	
AIR FILTER:	
FUEL FILTER:	

MAINTENANCE LOG

DATE:	DEALER STAMP:
MILEAGE:	
OIL TYPE:	
OIL FILTER:	
AIR FILTER:	
FUEL FILTER:	

DATE:	DEALER STAMP:
MILEAGE:	
OIL TYPE:	
OIL FILTER:	
AIR FILTER:	
FUEL FILTER:	

DATE:	DEALER STAMP:
MILEAGE:	
OIL TYPE:	
OIL FILTER:	
AIR FILTER:	
FUEL FILTER:	



MAINTENANCE LOG

DATE:	DEALER STAMP:
MILEAGE:	
OIL TYPE:	
OIL FILTER:	
AIR FILTER:	
FUEL FILTER:	

DATE:	DEALER STAMP:
MILEAGE:	
OIL TYPE:	
OIL FILTER:	
AIR FILTER:	
FUEL FILTER:	

DATE:	DEALER STAMP:
MILEAGE:	
OIL TYPE:	
OIL FILTER:	
AIR FILTER:	
FUEL FILTER:	

MAINTENANCE LOG

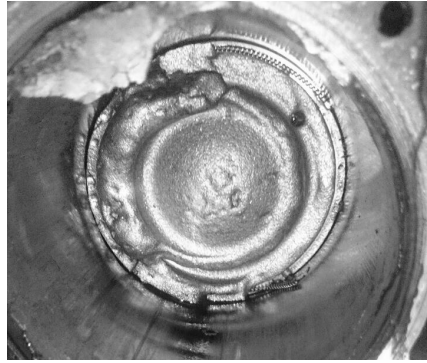
DATE:	DEALER STAMP:
MILEAGE:	
OIL TYPE:	
OIL FILTER:	
AIR FILTER:	
FUEL FILTER:	

DATE:	DEALER STAMP:
MILEAGE:	
OIL TYPE:	
OIL FILTER:	
AIR FILTER:	
FUEL FILTER:	

DATE:	DEALER STAMP:
MILEAGE:	
OIL TYPE:	
OIL FILTER:	
AIR FILTER:	
FUEL FILTER:	

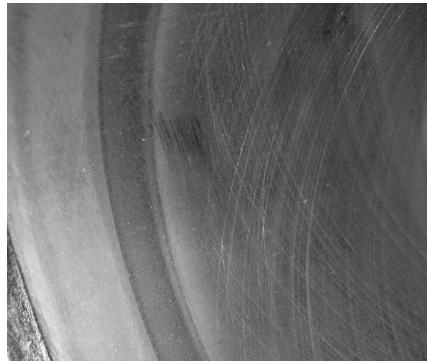
PISTON EROSION

Generally caused from a failed injector from fuel contamination. Change fuel filters at least every second oil change. Filter should come out white. If it shows signs of discoloration, have your fuel system inspected.



ENGINE DUSTING

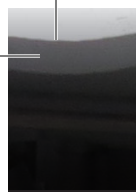
Caused from poorly maintained filters and incorrectly installed intake components. When changing air filter, wipe finger on inside of intake. If it has a buildup of dust, air is bypassing filter and will cause engine failure.



IMPROPER SERVICING

Not performing oil changes at recommended intervals can cause oil sludge buildup, leading to bearing failure. This is not covered by warranty so ensure proper servicing intervals.







11831 - 145 Street
Edmonton, Alberta, T5L 2H4
Ph: 780-455-0871 Fax: 780-455-0874
Toll Free: 1-877-836-8341
DFCDIESEL.COM